

Head of the Orchard – Round the Apple
Saturday, 6 October 2012

Head of the Orchard



**S
T
M
A
R
Y'
S
P
R
E
P
A
R
A
T
O
R
Y**

REGATTA RULES

- 1. ENTRIES**
- 2. ELIGIBILITY**
- 3. BOAT AND TRAILER STORAGE**
- 4. CHECK-IN**
- 5. COACHES/COXWAINS MEETING**
- 6. LIGHTWEIGHT CREWS**
- 7. COURSE**
- 8. BOW AND BACK NUMBERS**
- 9. START**
- 10. EVENTS**
- 11. CLASSES**
- 13. HOTSEATING**
- 14. CONDUCT DURING RACE AND PENALTIES**
- 15. FEES**
- 16. SITE PLAN/GENERAL INFORMATION**

Contacts

Regatta Chair; Dan Whalen.....	586.215.6711
Grounds Chair; Ray Duenas.....	248.421.5010
Grand Marshall; Shane Doyle.....	248.706.9321
Head Coach; Chris Czarnecki.....	734.634.8851

1. **ENTRIES:** All entries must include payment (payable to "**OLSM Crew Booster Club**" or through Regatta Central). The regatta entry deadline is midnight Monday, October 1, 2012. Payment is required no later than the coxswain call on race day.
2. **ELIGIBILITY:** Racing is limited to High School oarsman. All participants must be a member of the participating High School or Booster Club. Competition is restricted to oarsman in High School and under the age of 20.
3. **BOAT AND TRAILER STORAGE:** Overnight storage is available on the St. Mary's Preparatory parking lot where designated after 6:00 pm on Friday before the event. The St. Mary's Booster Club and Orchard Lake St. Mary's Preparatory/Schools are not responsible for equipment theft or vandalism.
4. **CHECK-IN:** All coaches or other parties responsible for each school or club must check in to confirm registration and receive race packets. Check-in will occur race day at Registration / Announcer Tent from 6:00 am to 7:30 am.
5. **COACHES/COXWAINS MEETING:** The meeting for coaches and coxswains will be inside the Oarsman (Coach's Corner) House as noted on the site map at 7:00am, race day. Bow numbers will be listed in the entry registration package and provided at the dock.
6. **LIGHTWEIGHT CREWS:** There will be no weigh-ins for Lightweight Crews or Coxswains. Protests regarding competitor weights must be made to Race Officials within 30 minutes of the conclusion of the event. Protests made outside that time period will not be allowed. Weigh-in scales will be on site in the eventuality of a protest. If a rower exceeds the Lightweight event weight limit, the rower's boat is disqualified.
7. **COURSE:** The course extends for approximately 2.5 - 3 miles around Apple Island on Orchard Lake. The course begins west of the launch area and concludes just south of the launch area. Maps will be available.
8. **BOW NUMBERS:** Bow numbers will be assigned at the dock and must be returned at the race conclusion. Your registration package will contain your crew's assigned number. All shells must have bow clips. Coaches, too avoid confusion, please instruct your coxswain to verify their dock assigned number against the registration package. Miss-numbering should be immediately brought to the dock's attention.
9. **START:** Directions for proceeding to the start will be announced at the Coaches/Coxswain Meeting. Boats must be ready to leave the dock at the specified launch time. Due to the large number of crews anticipated, quick launching is essential. Boats must arrive at the marshalling area 5 minutes before the event start.
10. **EVENTS:** Please see the Events List and Schedule in the Race Packet. Every effort will be made to keep to the published times. Entries may row only at the event time specified. Please contact the Regatta Chair for extenuating circumstances. Medals (gold, silver, bronze) will be awarded to winning crews.

11. CLASSES:

Junior: Freshman, sophomore or junior in High School. They cannot be in their senior year. Additionally the oarsman may not exceed 19-years of age.

Novice: Oarsman must not have competed before the current calendar year.

Open: Unrestricted by weight or experience

Lightweight:

Men's lightweight event: No rower shall weigh more than 155 lbs.

Women's lightweight event: No rower shall weigh more than 130 lbs.

12. HOTSEATING: Races will not be delayed to permit "hotseating". All crews enter at their own risk. Hot seat shells will be given priority docking when returning from a race when there are multiple shells awaiting recovery. The coxswain & coach must alert the Dockmaster of hot seat recovery. If a hot seat crew getting into a just-recovered shell must change oars or make adjustments, the oarsman must wet hot seat. We cannot tie-up the dock. Crews waiting for rowers to return from a previous race must wait on shore until the shell with the returning rowers is near the recovery area; unless instructed.

13. CONDUCT DURING TRANSIT, RACING, AND PENALTIES:

A. Boats passing other racing boats shall pass on the inside of a turn or curve. On straightaway areas of the course, the passing boat may take its choice of side. An overtaken boat will yield to the overtaking boat.

B. Any racing boat crossing the buoys (with any part of the hull of the boat, but not the oars) will be charged a 30-second penalty per crossing. All boats must finish between the finish line buoys, and any boat finishing outside the buoys will be charged a 30-second penalty.

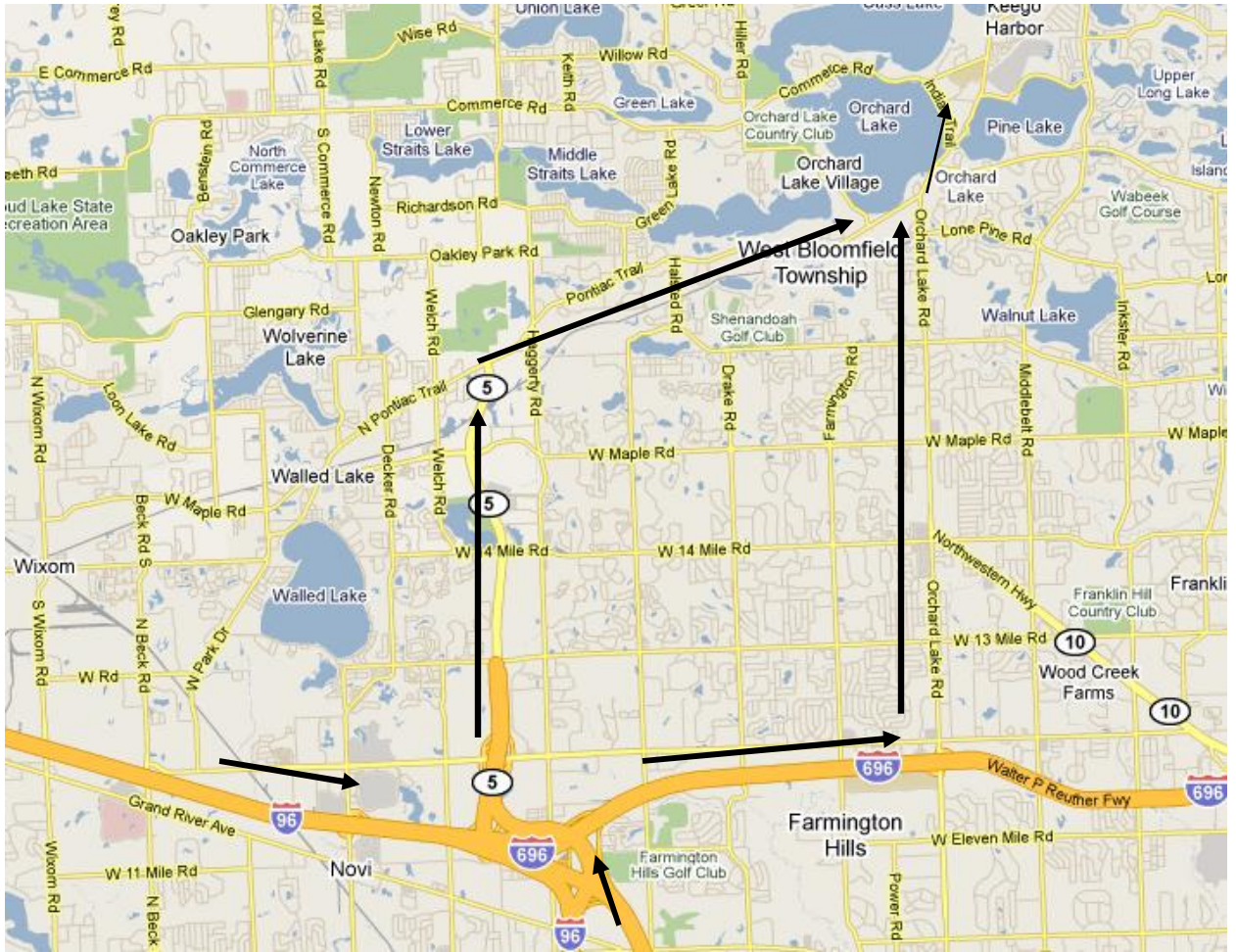
C. Any boat which, without justification, interferes with the forward progress of another boat, or which unreasonably fails to yield to an overtaking boat will be charged a 1-minute time penalty, or be excluded, at the discretion of the officials.

D. After crossing the finish line, continue rowing at a paddle to clear the lane.

14. FEES: Fees are not refundable due to acts of God, or withdrawal from an event the day of the regatta. Please see Regatta Central for fees.

15. SITE PLAN/GENERAL INFORMATION: The Round the Apple Regatta site plan is included in this packet and will be reviewed at the Coxswain/Coaches Meeting. The regatta is on the grounds of St. Mary's Preparatory High School. Please respect the grounds and observe the NO SMOKING policy. Pets are not allowed on St. Mary's grounds. The staging area for boats will on the North Lawn across from the St. Mary's Boathouse. US Rowing Association Rules of Racing apply to all situations not covered. The Regatta Chair and Grand Marshall shall have final say in any disputes.

Direction – Regatta



Traveling from Grand Rapids: Drive East on I-96 to Novi and the I-275/I-696 interchange.

Traveling from Ann Arbor: Drive North on I-275 to the I-275/I-696/I-96 interchange.

Ohio: Drive North on I-75 to I-275. Continue on I-275 to the I-275/I-696/I-96 interchange.

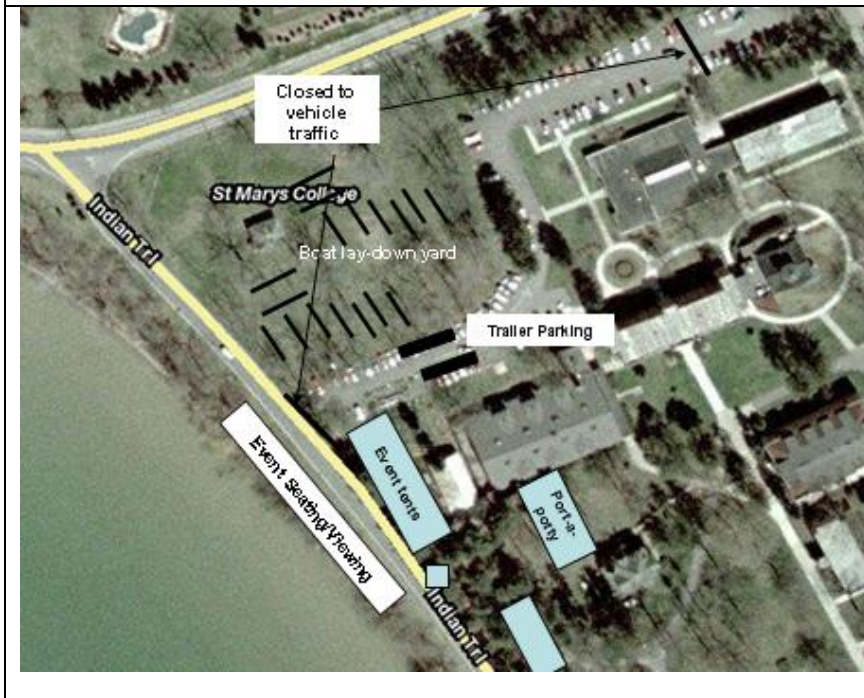
From here, you have two ways to reach Orchard Lake, St. Mary's Preparatory:

1. Continue on I-696 to Orchard Lake Rd and head North on Orchard Lake Rd.
2. Take M-5 North to Pontiac Trail Rd. Head North on Pontiac Trail Rd to Orchard Lake

Parking



Public Parking: Indian Trail will be closed between Seminary Drive and Commerce Rd from 7:00 am until 1:00 pm. You are recommended to proceed north on Orchard Lake Rd. to Commerce Rd. and proceed to parking. Follow the parking signs



Boat Trailers: The designated area for boat trailers is near the lay-down yard. Turning into the parking lot can be tricky. Drivers should approach the parking from Commerce Road. This will facilitate 1-way traffic flow into and out of the trailer area.

REGATTA COURSE – ORCHARD LAKE

We will race on Orchard Lake with boat launch from the dock and boat retrieval at the lakeshore. This is an open water start. The race course is subject to change with final course layout reviewed at the coxswain meeting.

